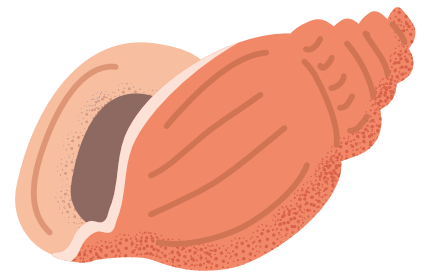


JULY



Highlights:



July 4: Office Closed



July 6: Superintendents Meeting



July 15-16 County Fair Horse Show

July 20-23: Shawnee County Fair

In this Issue:



Livestock Corner, Page 2-3



County Notes, Pages 4



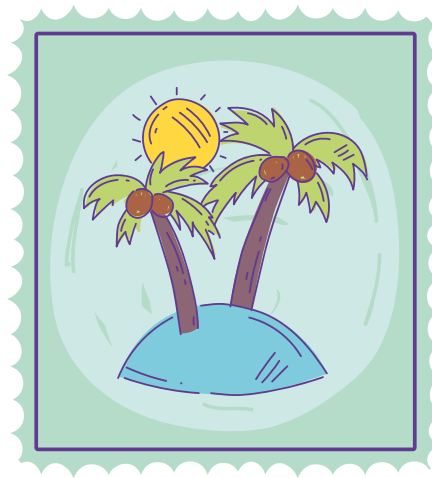
State Events, Pages 5-6



Club Chatter, Page 7-8



Shawnee County 4-H Calendar, Page 9



Shawnee County 4-H *Chatterbox*

"To Make the Best Better!"

Dates to Remember:

- **July 4: Office Closed**
- **July 6:
Superintendents
Meeting**
- **July 15-16: Shawnee
County Fair Horse
Show**
- **July 19: Help needed
for county fair setup**
- **July 20-23: Shawnee
County Fair**

Please send Chatterbox submissions to Grace, Haley, & Lisa by July 26th

Visit us on the Web:

www.shawnee.ksu.edu

Grace Wiens

4-H Youth Development Agent
wiensg@ksu.edu

785-232-0062 ext.120

Haley Kelley

4-H Program Assistant
kelley13@ksu.edu

785-232-0062 ext.112

Lisa Satterthwaite

4-H Office Professional
lsatter@ksu.edu

782-232-0062 ext. 111

A Word From Your Agent...

2023 Shawnee County Fair: Welcome to Fairadise!

With the county fair this month away here are a few tips to help you have a great fair experience:

- Keep cool and have fun! Fair can be a stressful time for everyone. Try and remember the reason for exhibiting at the County Fair: to support the knowledge gained by youth in their project that year. No matter the color of the ribbon received we want to celebrate how much they have learned!
- Know when exhibit check-in and judging times are. Times and places do change from year to year so double check the fair book schedule! All of the exhibits this year will be in Exhibition Hall or the Livestock Pavilion.
- Don't be afraid to ask questions! If you have a question about an exhibit, ask your division superintendent or the Extension Staff. On Thursday and Friday there will always be someone at the information table in Exhibition Hall to help you.
- When in doubt, read your fair book. The county fair book is a great place to start when you need to know division rules or what materials you need to bring for your exhibit.
- The County Fair is a great time to enter your State Fair exhibits! There will be forms at the info table in Expo Hall. State Fair entries are due August 4th for everything except livestock and horse. Youth 9 and older can enter for the state fair and many of the exhibits can be transported by the Extension office. We take a minivan so we cannot take large items like big woodworking exhibits.
- Please make sure you or someone you know is picking up your fair entries on Sunday, July 23rd at 5:30pm or immediately following the Fashion Revue. All exhibits need to be removed from the fair between the end of Fashion Revue and 6:30pm. If you pick up exhibits for another youth, please communicate with that family you are doing so before you leave the fair. No exhibits can be picked up before the conclusion of the Fashion Revue.
- Once again this year we will be loading the fair semi-trailers after the fair on Sunday. Please plan to stay around the fair for a little while to help us put the fair away.

Thank you in advance to all the volunteers that help make the Shawnee County Fair possible. We look forward to seeing you July 15th-16th for the Horse Show and July 20th-23rd at the Shawnee County Fair!

**VOLUNTEERS
NEEDED**

Come help set up the fair!

Setup for the fair will be Wednesday the 19th. We will start unloading the trailers at noon. As things are moved in by the forklift, we will need 4-Hers who can help build displays inside and in the barn and get smaller items taken around to their project areas. Setup for superintendents starts at 4, so we need to have everything built and in place by then. If you're involved in a project you might want to submit a record book in, this is a great leadership activity to put down!

"To Make the Best Better!"

Livestock Corner



Important Dates

July 1st Fair Entries Deadline

July 15th State Fair Grand Drive Entries Due

August 19-20th (tentative) State 4-H Livestock Sweepstakes

September 8-17th Kansas State Fair

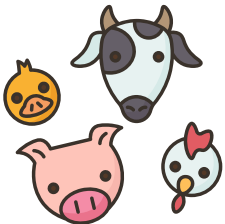
September 29 – October 1st Kansas Junior Livestock Show

Youth for the Quality Care of Animals (YQCA)

YQCA Training is still required for all Shawnee County Livestock Exhibitors 4-H Age 7-18 (including Meat Rabbits & Broiler Meat Chickens). Please remember that if you are showing Cattle, Goats, Sheep and/or Swine we are needing a copy of your YQCA Certification.

If you are planning on selling an animal (including a meat pen of Rabbit or Poultry) in the Livestock Sale at the fair, we are needing a copy of your YQCA Certification and a signed copy of your Buyer/Drug Withdrawal.

Please feel free to bring them into the office or email them to Haley, kelley13@ksu.edu. If you are not sure if we have a copy of any of the above please reach out to double check.

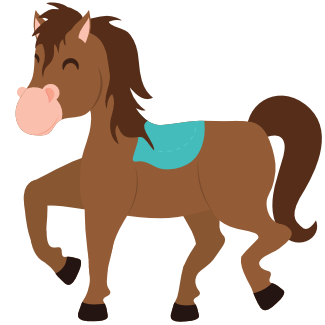


Calling all Livestock Exhibitors:

Cattle, Goats, Horse, Poultry, Rabbits, Sheep and Swine!

Friday, July 14th, we will be needing 4-Hers to volunteer to help move shavings off a trailer and onto pallets here at the Barn. Please be on the look out for an email with more information to come.

"To Make the Best Better!"



Kansas State Fair 4-H Horse Show Qualifying Information

Submitted by Kelsey Nordyke

In order to exhibit at the Kansas State Fair 4-H Horse Show, a 4-H Horse Project member must complete the following:

- Have a horse properly ID'ed with a 4-H Horse ID or Horse Registration Certificate by June 1, 2023.
- Participate in a horse show in the event category that they wish to exhibit at the Kansas State 4-H Horse Show.
- Complete the 4-H Horse Safety Webinar and receive a passing score of at least 75% on the Horse Safety Quiz.
- Complete the online 4-H Horse Show entry via ShoWorks at <https://www.kansasstatefair.com/p/competitions/equine> by August 1.

The 4-H Horse Safety Webinar and Quiz are now available at <https://bit.ly/3zbn5XC>.

As members begin preparing for the State 4-H Horse Show, they are encouraged to review their readiness with "Are You Ready?" at <https://bit.ly/horseready>. The Kansas State 4-H Horse Show is an advanced level event. For the safety of our 4-H members and volunteers, it is important that participants are able to master the appropriate skills





Shawnee County 4-H *Chatterbox*

"To Make the Best Better!"

County Notes

Horticulture Judging Practice

The last practice is **July 7th** from 2:00-4:00 at the EMR and will focus on plant identification, quality judging, and general horticulture knowledge. You don't have to be a member of the horticulture project to participate, you just have to be a registered 4-Her and open to learning more about plants!



School Enrichment is needing to restock the supply of egg cartons.

These cartons are used to transport the hatching eggs from the Nelson Hatchery to the schools for the Chicken Embryology Program.

Please bring your empty/used 12 count egg cartons to the office and let someone know they are for school enrichment. Every donation is greatly appreciated.

Record Book Tip of the Month!

Parts of a Record Book Part I

Record Books can be intimidating. Learning about the different parts can make it easier to understand as a whole.

Make sure to read the August Chatterbox for Part II!



1. Check Sheet
 - a. For use at all levels. Ensures all parts are in the book at each stage.
2. Personal Information Page
 - a. Let's reviewers know who the book belongs to
3. Permanent Record (4 sections)
 - a. Groups & Organizations
 - b. Communications/Presentations/Exhibits/Contests
 - c. Activities
 - d. Most Important Recognitions

Shawnee County 4-H *Chatterbox*

"To Make the Best Better!"

State Events



Kansas 4-H Wheat Expo

When: Tuesday, August 8, 2023

Where: Pratt Area 4-H Center, Pratt, Kansas

Register by July 25 at:
<https://bit.ly/wheatexpo>

State 4-H Horticulture Judging Contest

The State 4-H Horticulture Judging Contest will be held on **Saturday, August 12, 2023**, in Manhattan, Kansas (tentative planned date). Our contest is hosted for the day by the Department of Horticulture and Natural Resources.

A tentative schedule is available at Horticulture Judging | Contests | Events and Activities | Kansas 4-H Youth Development



2022 Horticulture Judging team members

Qualifying Shooting Sports Match Dates

Archery

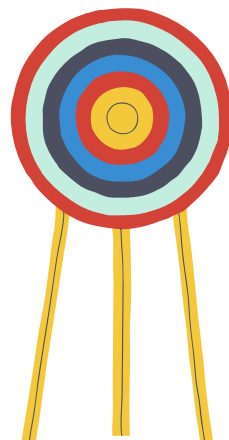
Midway District: July 8; Ellsworth, KS- Registration due by 5 pm July 5

Johnson County: August 12; Lenexa, KS

Gray County: August 19; Cimarron, KS- Registration due by 4:30 pm August 14

Shotgun

Gray County: August 26; Cimarron, KS



Shawnee County 4-H Chatterbox

"To Make the Best Better!"

Kansas State Fair

The Kansas State Fair is September 8-17, 2023! State Fair entries will be **due to our office August 4th**. The State Fair book and forms will be at the Information Table at the County Fair. Please reach out to the office if you have any questions!



48 Hours of 4-H 2023

We hope every Extension Unit will join us this fall in seeing just how much we can give back to our communities! The weekend after National 4-H Week, is the perfect opportunity to setup a service project. Invite your friends, clubs, adult volunteers and 4-H Alums too!

When: October 7-8, 2023

Who: 4-H Members, 4-H Clubs, Friends, Adult Volunteers, Parents, 4-H Alumni

It's time to make plans for your club to participate. More information on the 48 Hours of 4-H Webpage, <https://www.kansas4-h.org/events-activities/conferences-events/48-hours-of-4-h/>

K-STATE |
Research and Extension

**48 Hours
of 4-H**
A weekend of service. A lifetime of impact.

Shawnee County 4-H *Chatterbox*

"To Make the Best Better!"

Club Chatter

Rossville Rustlers

Throughout the spring, the Rossville Rustlers have been busy with club and community activities. In March, the club sold flowers for their annual fundraiser. In April, the club helped plant flowers on Main Street and around town. During the May meeting, we recognized the graduating senior members of our club and congratulated them for their leadership and commitment to the community. To celebrate Memorial Day, 4-Hers helped put up flags at the Rossville Cemetery, along with the help of other community volunteers.



-Cameron Thompson



Silver Lake

This month, the Silver Lake 4-H group has been gearing up for the fair next month. The Weber family hosted a showmanship lesson for the members who will be showing pigs at the fair this year. Sheldon led the lesson and members enjoyed some time to practice the techniques.

Respectfully submitted by Jaylee Hamilton



"To Make the Best Better!"

Shawnee Riders



A lot of people were on vacation so everyone else had to step up to the plate!

Bunny Bunch

This month, Bunny Bunch is getting ready to set up for the Shawnee Co. Fair next month. We will have youth contests and prizes! Check out the Shawnee Co Fair book for more information. Hope to see you there!

Paw Prints

The Paw Prints club had lots of fun this month with our practices. We worked on agility, showmanship and obedience and also practiced running agility courses with our dogs, worked on figure eights and long stays in obedience. For showmanship, we practiced running down and back and answered questions about our dogs. We are working hard to prepare for the fair!

-Kinley Ladd



Shawnee County 4-H *Chatterbox*

"To Make the Best Better!"

Shawnee County 4-H Calendar

July 2023

1 County Fair Entries DUE

3 Bunny Bunch Rabbit Club Meeting, EMR, 7 pm

4 Office Closed

5 4-H Horse Clinic, Domer Arena

6 Archery, Domer Arena, 6 pm

4-H Exchange, Farm Bureau Building, 7pm

Fair Superintendents Meeting, EMR, 7 pm

7 Horticulture Judging Practice, EMR, 2 pm

11 Geology, TSCPL Marvin Auditorium C, 7 pm

14 Shawnee County Fair Clothing Judging

Shawnee County Fair Horticulture Judging

15-16 Shawnee County Fair Horse Show

16 Shawnee County Fair Photography

Judging

19 Livestock Committee, Conference Room, 7:30

pm

20-23 SHAWNEE COUNTY FAIR!

24 Paw Prints Dog Club Meeting, EMR, 7 pm

26 Chatterbox Submissions Due

27 Horse Club, EMR, 7 pm

August 2023

2 4-H Horse Clinic, Domer Arena

3 4-H Exchange, Farm Bureau Building, 7 pm

4 State Fair Entry Forms due to Office

5-6 4-H Open Horse Show

7 Bunny Bunch Rabbit Club Meeting, EMR, 7

pm

10 4-H Events Council, EMR, 7 pm

12 State Horticulture Judging, Manhattan

16 Livestock Committee Meeting, Conference

Room, 7:30 pm

24 Horse Club, EMR, 7 pm

26 Chatterbox Submissions Due

28 Paw Prints Dog Club Meeting, EMR, 7 pm

30 4-H Horse Clinic, Domer Arena

K-State Research and Extension is an equal opportunity provider and employer.

K-State Research and Extension is committed to providing equal opportunity for participation in all programs, services and activities. Accommodations for persons with disabilities may be requested by contacting the event contact (Grace Wiens) two weeks prior to the start of the event. You may make a request by calling 785-232-0062, ext. 120, or by e-mail at wiensg@ksu.edu. Requests received after this date will be honored when it is feasible to do so.

All dates and activities are subject to change.