

APRIL 2025

Highlights:

- 🌸 April 10: Events Council Meeting
- 🌸 April 16: From Farm to You
- 🌸 April 23: YQCA Session
- 🌸 April 27: Small Animal Weigh-In
- 🌸 April 29: Volunteer Training
- 🌸 April 30: Langley-Foster Scholarship Applications DUE
- 🌸 MAY 1: ENROLLMENT DEADLINE

In this Issue:

- 🌸 County Notes, Page 2-3
- 🌸 Livestock Corner, Page 4-6
- 🌸 Scholarship Info, Page 7
- 🌸 State News, Page 8-9
- 🌸 Club Chatter, Page 10
- 🌸 Shawnee County 4-H Calendar, Page 11



Shawnee County 4-H *Chatterbox*

"To Make the Best Better!"

Dates to Remember:

- April 10: Events Council Meeting
- April 16: From Farm to You
- April 23: YQCA Session
- April 27: Small Animal Weigh-In
- May 1: ENROLLMENT DEADLINE

In the event of severe weather check our Facebook page for updates!

Search for
Shawnee County 4-H



Please send Chatterbox submissions to Lisa and Grace by April 26

Visit us on the Web:

www.shawnee.ksu.edu

Grace Wiens

4-H Youth Development Agent
wiensg@ksu.edu
785-232-0062 ext.120

Lisa Satterthwaite

4-H Office Professional
lsatter@ksu.edu
785-232-0062 ext. 111

A Word From Your Agent...

Happy Spring! With the weather warming up and the 4-H programming gearing up, this is a very exciting time of year!

Remember, May 1 is still our 4-H enrollment deadline. With the program fee, please do not wait until May 1st to enroll or check your projects. We are not able to add a 4-H project or accept an enrollment on May 2nd. If you do not have your enrollment submitted by May 1st, you will not be able to exhibit at the County Fair. If you need to add a project, you will need to contact the Extension office and have us add it for you.

You only get Chatterbox if you are enrolled in 4-H Online. The projects you are enrolled in on May 1st are the only projects you can participate in for the county fair. **GOING TO PROJECT MEETINGS DOES NOT ENROLL YOU IN THAT PROJECT. GOING TO 4-H MEETINGS DOES NOT ENROLL YOU IN 4-H.** If you have any questions, please let me know. 4-H'ers can join a club after May 1st but they cannot participate in 4-H divisions of the 2024 Shawnee County Fair.

There are \$100 scholarships available for Discovery Days again this year! If you are an enrolled Shawnee County 4-Her, we will apply the amount directly to your balance before invoicing you. Registration will be posted here later this week: <https://www.kansas4-h.org/educational-experiences/project-based-events/conferences-events/discovery-days/>

Shawnee County GroupMe

Interested in text updates about Shawnee County 4-H activities? Sign up for our new GroupMe:

https://groupme.com/join_group/102815469/5JDLs55L

Requests to join are subject to approval, and we will only accept enrolled members and their parents/guardians as listed in 4-H Online.

Ambassador Information

4-Hers who are program age 12 or older and who have been in 4-H for at least 3 years are encouraged to join the group! For email updates, please sign up for the official Ambassador's email list here:

<https://forms.gle/4yTw5tZoGNtzRwwGA>

Shawnee County 4-H *Chatterbox*

"To Make the Best Better!"

County Notes

Shawnee County 4-H Royalty News

Shawnee County 4-H Royalty represented the 4-H program by helping at the 2025 Snowflakes and Clovers Fair Board Fundraiser in February. All royalty helped with dinner and the fundraising auction. The King & Queen plan to speak to all community clubs in March and April encouraging clubs to nominate candidates this year. Nomination and application information was sent directly to club leaders in March. Please contact us at 4hkingandqueensncoks@gmail.com for more information.

Cameron Thompson, 2024-25 4-H King
Megan Louderback, 2024-25 4-H Queen



Coding & Robotics Meetings

Attention All Coding and Robotics Interest:

Hi, I'm Miles Burgess and for the last few years I have been doing coding and robotics and recently there has been not many people doing the project So, I am starting to host a coding class where you will learn coding from the basics being scratch (Basic coding website) to being able to code python (Coding Language) and develop software of your choosing. In this class we can also work on fair projects and other forms of coding. The dates for the class is as follows

Wednesday, May 7th - 6:30 pm-8 pm
Wednesday, June 4th - 6:30 pm-8 pm
Wednesday, July 2nd - 6:30 pm-8 pm

The coding class will be held in the upstairs meeting room at the extension office. Hope to see you there.

"To Make the Best Better!"

Volunteer Information

From Farm to You- Volunteers Needed!

From Farm to You will be held April 16 from 9:00am-2pm in Domer Arena. We have Shawnee County second graders attending to learn about where their food comes from. We need 4-H'ers (8th graders and above) to act as group leaders throughout the day. 4-H'ers will guide the students and their teachers from learning station to learning station. This is a great service project and is also fun to watch the second graders learn about their food. We will provide lunch that day and if your school needs a note for your absence, we can do that too!

Please email Grace at wiensg@ksu.edu and let her know if you can help with this program.

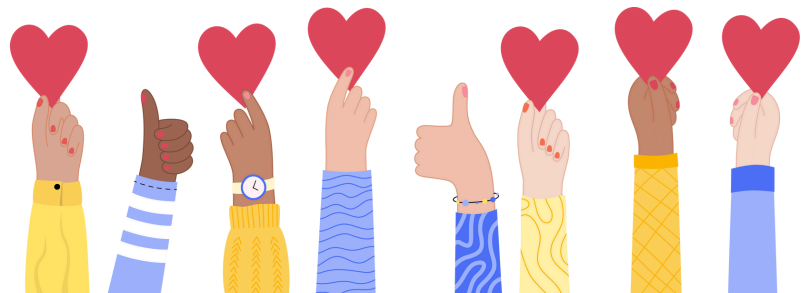
Volunteer Appreciation Lunch

Save the date for April 22nd from 11-1! We will be hosting a taco bar lunch at the extension office to show our appreciation for our amazing volunteers. We would love to have you stop by and join us over your lunch hour.

We truly wouldn't be able to run our program without your help and want to celebrate YOU and all your efforts! It is come & go, RSVP is not required, but if you know that you are planning to come please let us know by April 18th.

County Volunteer Training- April 29

There will be an in-person volunteer training held at the Extension Office on April 29th. This is for new volunteers or those whose volunteer screening is expiring in 2025. Please RSVP by April 22nd if you plan to attend!



"To Make the Best Better!"

Livestock Corner

Mark Your Calendars for YQCA

2025 YQCA sessions will be held at the following times:

Wednesday, April 23 at 6 pm

Saturday, May 17 at 9 am



Save the Date for Small Animal Weigh-in!

April 27, 2025 from 1-4 pm



If you plan to show bucket calves, meat goats, sheep, or swine they are required to be tagged. Location and address will be sent to youth in the livestock projects. PLEASE MAKE SURE YOU HAVE COMPLETED YOUR ENROLLMENT TO RECEIVE THIS INFORMATION!

Please contact Grace or Lisa if you are unable to be at weigh-in!

State Livestock Nomination Dates

- April 20: DNA Envelopes Ordered for Market Beef
- May 1: Nomination Deadline for Market Beef, steers and market heifers
- June 5: DNA Envelopes Ordered for Small Livestock & Commercial Breeding Heifers
- June 15: Nomination Deadline for Small Livestock & Commercial Heifers
 - market hogs, commercial gilts, market lambs, commercial ewes, market meat goats, breeding does (ALL- commercial and registered), commercial heifers

IMPORTANT

Families who have previously nominated livestock should have an email from Lexie Hayes with more detailed information. In addition, more information can be found at: <https://www.asi.k-state.edu/extension/youth-programs/nominated-livestock/>. If you have questions, please reach out to the office and we can connect you to the state office.

"To Make the Best Better!"

Livestock Corner

Important Update to Livestock Rules for County Fair

Sheep, Swine & Meat Goat Limits Increased

The maximum number of entries for all three small animal livestock species has been increased! You can now bring 3 animals/phase of the project (breeding or market) with a maximum of 6 animals/species. So you could bring up to 3 market hogs & 3 gilts, 3 market lambs & 3 breeding ewes, and 3 market goats & 3 breeding does. All county fair animals must be tagged either at their species Weigh-In date or by the Friday immediately following if you are unable to make it to tagging & weigh-in. Animals tagged outside of weigh-in will not be eligible for the Rate of Gain contest at the fair.

Review of Livestock Sale Rules

The limit for the premium auction will still be 2 animals/4-Her. Beef, Sheep, Swine, Meat Goats, Poultry, & Meat Rabbits are all eligible. We will use the same structure as in the 2024 fair, with the option to sell you animal for premium only and take it home, or sell it for premium and floor & have a buyer send it to a locker. Youth from all species will be required to complete YQCA training, attend 2 of 3 educational sessions hosted by the Livestock Committee, and turn in livestock drug withdrawal & buyer forms in order to sell an animal through the premium auction.



Shawnee County 4-H Chatterbox

"To Make the Best Better!"

Livestock Shows

Gary Fuller Spring Classic

On the Lyon County Fairgrounds



May 3-4, 2025 — Lyon County Fairgrounds, Emporia, KS

No Pre-Entries - Enter Day of Show ONLY

\$20 per head (cash or check only)

SCHEDULE:

Saturday, May 3 — sheep, goats and beef

8:00-8:30 a.m.	Sheep Weigh-in/Breeding Check-in
9:00-9:30 a.m.	Meat Goat Weigh-in/Breeding Check-in
9:30 a.m.	Sheep Show
11:30 a.m.	Goat Show (or 30 minutes after Sheep Show)
3:00-4:00 p.m.	Market Beef weigh-in & breeding heifer check-in
2:30 p.m.	Bucket Calf Check-in
3:15 p.m.	Bucket Calf Show
4:30 p.m.	Beef Show — show order: heifers, showmanship, Lyon County only class, followed by market

Sunday, May 4 — swine

7-8:00 a.m.	Scales Open (exhibitors weigh own hogs)
9:00 a.m.	Swine Show — beginning with showmanship

The Bluestem Farm & Ranch Supply Prize Trailer will be available for awards.

All showmanship exhibitors will receive an award T-shirt (will receive a t-shirt for each showmanship class entered)

Champion prospect market hog will receive a Gary Fuller Spring Classic buckle!

Open to 4-H/FFA youth ages 7 to 18 (4-H age) exhibiting sheep, meat goats, market steers and heifers, breeding heifers, bucket calves and swine



Shawnee County Spring Show

May 10th, 2025

Livestock Building, Northeast Kansas

Heritage Complex

12200 214 Rd, Holton, KS 66436

For show information contact: 4-H

Livestock Committee

Telephone: (785) 232-0062 Ext. 120 E-

mail: wienosg@ksu.edu

Sponsored by: The Shawnee County 4-H

Livestock Committee

Find the flyer, rules, class listings and more at: https://www.shawnee.k-state.edu/4-h/4-h_livestock/spring_show/



For more information contact:
Lyon County Extension Office
2632 W Hwy 50
Emporia, KS 66801
(620) 341-3220



Kansas State University is committed to making its services, activities and programs accessible to all participants. If you have special requirements due to a physical, vision, or hearing disability, contact K-State Research and Extension - Lyon County office at 620-341-3220 or Director of Affirmative Action, Kansas State University, (TTY) 785-532-4807. K-State Research and Extension is an equal opportunity provider and employer.

"To Make the Best Better!"

Scholarship Information

Shawnee County Scholarship Information AVAILABLE

Shawnee County Extension Education Foundation and Langley Foster Scholarship applications are now available! Details are posted on the website: https://www.shawnee.k-state.edu/4-h/awards_and_recognition/scholarships/

Langley Foster 4-H Scholarship

Eligibility

- Must have been a member of Shawnee County 4-H for three (3) years or more
- Full-time college student (sophomore, junior, senior) enrolled in 12 or more hours with a 3.0 grade point average (unweighted)
- Current Year state 4-H scholarship winners are excluded

Applications due April 30, 2025!

"To Make the Best Better!"

State Events

Spring into Volunteering- Save the Date!

The Association of Kansas 4-H Volunteers is hosting "Spring Into Volunteering" in Salina on the K-State Polytechnic Campus on Saturday, April 26. Registration will begin at 9 a.m., and the day will conclude at 3 p.m. This is for anyone serving as a 4-H Volunteer or considering it! The goal is for volunteers to go home recharged, excited, and ready to try new things in their volunteer roles.

Sessions for the day include Preparing Youth for Real-World Opportunities, Personalities and How They Affect Volunteers, Facilitating Civic Engagement and Service, Keeping Kids Engaged, and Resources for You.

The registration fee for the day is \$20 and includes materials and lunch! Online registration is due April 15, 2025.

More information will be available soon! Reach out to the office if you have any questions!



Shutterbugs at Botanica

Join Kansas 4-H State Photography members for Shutterbugs at Botanica on May 3 in Wichita! Botanica will be blooming with photo opportunities. Photo workshops run from 9:30 am to 12:00 pm that day.

Cameras will be available to check out at the event, but youth must provide own SD card.

Registration fee: \$24 per attendee

Get registered today:

<https://cvent.me/arPGWe>



REGISTER TODAY

4-H PHOTOGRAPHY SHUTTERBUG EVENT

Saturday, May 3 in Wichita at Botanica from 9:00-12:00

K-STATE Research and Extension

 Kansas State University Agricultural Experiment Station and Cooperative Extension Service. K-State Research and Extension is an equal opportunity provider and employer.



"To Make the Best Better!"

KSRE News

IPM Insect Art Contest

The K-State Research and Extension Pesticide Safety and IPM Program is hosting its annual insect-themed art contest, open to all ages and skill levels in Kansas!

This year, the theme is "By the Light of the Moon: Insects at Night."

The goal is to explore why and how insects are active or inactive at night, then create artwork that fits the contest theme. Art may be a drawing or painting, digital art, or a 3-D piece such as sculpture, stained glass or other media.



There are five age categories in which 1st - 3rd place will be awarded:

- Kindergarten - 2nd grade
- 3rd grade - 5th grade
- 6th grade - 8th grade
- High school
- Adult



Entries must be received or postmarked before April 15, 2025.

Visit <https://www.ksre.k-state.edu/pesticides-ipm/> for full details.

Shawnee County 4-H *Chatterbox*

"To Make the Best Better!"

Club Chatter

Indian Creek

Indian Creek club members are getting enrolled and ready for the new 4-H year! We had our monthly meeting March 17th at the Shawnee Optimist Club.

We had a special guest, the Shawnee County 4-H King, who came to talk to us about why we should consider running for king and queen.

We had a really fun game for recreation called Apple, Orange, Banana. We all played together, and we laughed a lot.

We ended the evening with a Little Debbie buffet with Capri Suns.

-Lakyn Stoneking



Bunny Bunch

This month we discussed the Shawnee County Fair and have hired our Judge. It will be ARBA sanctioned and we decided on what breeds to sanction. Kierstyn T. did a presentation on what to feed rabbits. Bunny Bunch 4-H meetings are held the first Monday of each month. Our next meeting will be April 7th at 7pm in the upstairs meeting room. Our May meeting will be the 5th at 7PM.

We hope to see you there.

-Brooklynn Powell



Grove

Three members of Grove 4-H Club went to Jr. Meat Goat Producer Days at K-State on March 22. They learned about proper feeding, picking a goat, showmanship, and preparing a goat to show.

-Chance Nolte



Shawnee County 4-H *Chatterbox*

"To Make the Best Better!"

Shawnee County 4-H Calendar

April 2025

- 2 Shooting Sports I, EMR, 7 pm
- 3 Shooting Sports II, EMR, 6:30 pm
4-H Exchange, Farm Bureau Building, 7 pm
- 7 Bunny Bunch Club Meeting, EMR, 7 pm
- 9 Shooting Sports I, EMR, 7 pm
- 10 4-H Events Council, EMR, 7 pm
- 15 Geology, Stoffer Hall at Washburn, 7 pm
- 16 From Farm to You, Domer Arena, 9 am
Shooting Sports I, EMR, 7 pm
Livestock Committee Meeting, Conference Room, 7:15 pm
- 17 Archery, Domer Arena, 6 pm
- 22 Shawnee County Fair Board, EMR, 7 pm
- 23 YQCA Training, EMR, 6 pm
- 24 Archery, Domer Arena, 6 pm
Horse Club Meeting, EMR, 7 pm
- 26 Chatterbox Submissions Due**
- 27 Small Animal Weigh-In, Blythe's, 1-4 pm
- 28 Paw Prints Dog Club Meeting, EMR, 7 pm
- 29 Volunteer Training, EMR, 7 pm
- 30 Langley Foster Scholarship Application Deadline, 5 pm

May 2025

- 1 Shooting Sports II, EMR, 6:30 pm
4-H Exchange, Farm Bureau Building, 7 pm
- 5 Bunny Bunch Club Meeting, EMR, 7 pm
- 7 Robotics/Coding Project Meeting, EMR, 6:30 pm
- 10 Shawnee County Spring Livestock Show, Holton
- 12 Shooting Sports I, EMR, 7 pm
- 13 Sport Fishing, EMR, 6 pm?
- 14 Archery, Domer Arena, 6 pm
- 17 YQCA Training, EMR, 9 am
- 20 Geology, Stoffer Hall at Washburn, 7 pm
- 21 Livestock Committee Meeting, Conference Room, 7:15 pm
- 22 Horse Club Meeting, EMR, 7 pm
- 26 Office Closed- Memorial Day**
Paw Prints Dog Club Meeting, EMR, 7 pm
- 27 Chatterbox Submissions Due**
Shawnee County Fair Board, EMR, 7 pm
- 28 Archery, Domer Arena, 6 pm

EMR= Extension Meeting Room at
Extension Office

K-State Research and Extension is an equal opportunity provider and employer.

K-State Research and Extension is committed to providing equal opportunity for participation in all programs, services and activities. Accommodations for persons with disabilities may be requested by contacting the event contact (Grace Wiens) two weeks prior to the start of the event. You may make a request by calling 785-232-0062, ext. 120, or by e-mail at wiensg@ksu.edu. Requests received after this date will be honored when it is feasible to do so.

All dates and activities are subject to change.