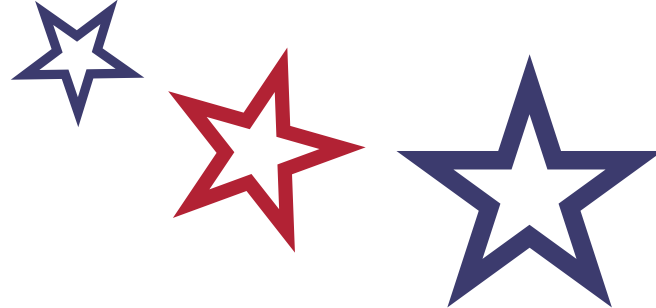


MAY 2025

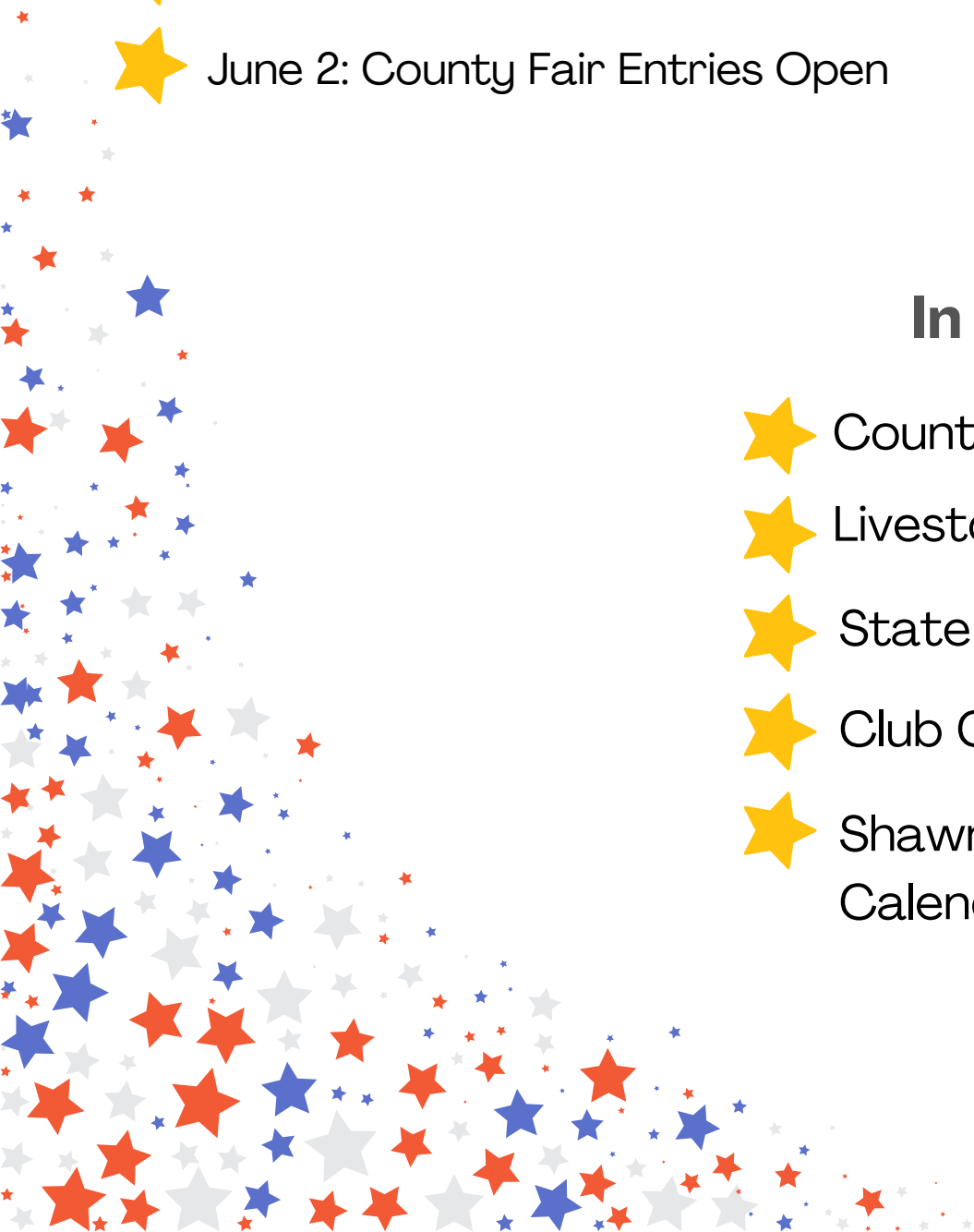


Highlights:

- ★ May 10: Shawnee County Spring Livestock Show, Holton
- ★ May 17: YQCA Session
- ★ May 26: OFFICE CLOSED for Memorial Day
- ★ May 30: Horse ID Papers due to office
- ★ June 2: County Fair Entries Open

In this Issue:

- ★ County Notes, Page 2-4
- ★ Livestock Corner, Page 5
- ★ State Events, Page 7
- ★ Club Chatter, Page 9
- ★ Shawnee County 4-H Calendar, Page 10



Shawnee County 4-H *Chatterbox*

"To Make the Best Better!"

Dates to Remember:

- May 10: Shawnee County Livestock Spring Show, Holton
- May 17: YQCA Session
- May 26: Office Closed for Memorial Day
- May 30: Horse ID Papers due to office
- June 2: County Fair entries OPEN

In the event of severe weather check our Facebook page for updates!

Search for
Shawnee County 4-H



Please send Chatterbox submissions to Lisa and Grace by May 27

Visit us on the Web:

www.shawnee.ksu.edu

Grace Wiens

4-H Youth Development Agent
wiensg@ksu.edu
785-232-0062 ext.120

Lisa Satterthwaite

4-H Office Professional
lsatter@ksu.edu
785-232-0062 ext. 111

A Word From Your Agent...

Hello Shawnee County 4-H,

As the school year winds down, things are getting busier here at the office with fair preparations! Printed fair books will be available for pick up from your club boxes at the office by mid-May. Keep an eye out for an email from 4-H Online notifying you that they are ready. The deadline to enter fair projects will be July 1, so make sure you mark that date on your calendar! We will not accept late entries, the July 1 deadline is final. You will receive a user guide to FairEntry when entries open. Lastly, please, if you have questions about your entries, contact us before the July 1 deadline so we can help you!

7-11 year old 4-Hers: Save the date on June 21st for a Field Day hosted by the Ambassadors! We'll have some Barnyard Bash themed activities and lots of fun with other 4-Hers! Keep an eye out for a 4-H Online email with final details on location and registration information.

13-18 year old 4-Hers: There are just a few days left to sign up for Discovery Days! We do have \$100 scholarships again this year. Be sure to sign up by May 5th!

-Grace

Shawnee County GroupMe

Interested in text updates about Shawnee County 4-H activities? Sign up for our new GroupMe:

https://groupme.com/join_group/102815469/5JDLs55L

Requests to join are subject to approval, and we will only accept enrolled members and their parents/guardians as listed in 4-H Online.

Ambassador Information

4-Hers who are program age 12 or older and who have been in 4-H for at least 3 years are encouraged to join the group! For email updates, please sign up for the official Ambassador's email list here:

<https://forms.gle/4yTw5tZoGNtzRwwGA>

Shawnee County 4-H *Chatterbox*

"To Make the Best Better!"

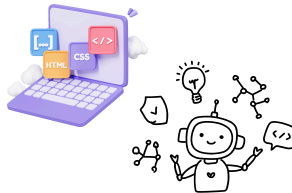
County Notes

Coding & Robotics Meetings

Attention All Coding and Robotics Interest:

Hi, I'm Miles Burgess and for the last few years I have been doing coding and robotics and recently there has been not many people doing the project So, I am starting to host a coding class where you will learn coding from the basics being scratch (Basic coding website) to being able to code python (Coding Language) and develop software of your choosing. In this class we can also work on fair projects and other forms of coding. The dates for the class is as follows

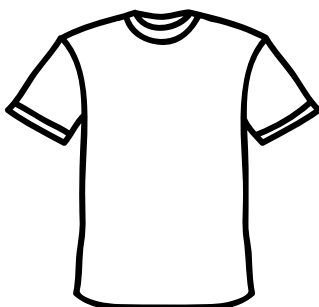
Wednesday, May 7th - 6:30 pm-8 pm
Wednesday, June 4th - 6:30 pm-8 pm
Wednesday, July 2nd - 6:30 pm-8 pm



The coding class will be held in the upstairs meeting room at the extension office. Hope to see you there.

Fair Shirts for 4-Hers

Fair shirts will be available again for Shawnee County youth 4-H members thanks to the support of the County Events Council. If you wish to order a Fair t-shirt, please do so at the link below. Distribution details will be shared next month.
Tshirt Link : <https://forms.gle/JbkQuf413GMtvYk59>



Horticulture Judging Contest

Practices

Hello! I'm Lane Wiens, the Horticulture Extension Agent for the county and also the coach for the horticulture judging contest team. Just like the last couple of years, I'll be holding three practices for the contest over the course of the summer. The first will be June 12 from 9:30-11:30 at Jackson's Greenhouse (1933 NW Lower Silver Lake Rd.) to work on skills in flower and tree identification. The other two practices, scheduled for June 26th and July 10th from 1:30-3:00, will be held at the Extension Office and focus on the other aspects of the contest. These practices are open to any 4-Her that would like to participate in the judging contest!

June 12, 9:30-11:30, Jackson's Greenhouse

June 26, 1:30-3:00, Shawnee County Extension Office

July 10, 1:30-3:00, Shawnee County Extension Office

I'll see you then!



"To Make the Best Better!"

Shawnee County Royalty News

Thank you to those clubs that have allowed us to come and speak as well as those that have donated to the King & Queen Event in 2025. We also spoke to one of the local Rotary clubs in April.

If you have selected nominees (2 king, 2 queen candidates and 1 prince and 1 princess) we are asking club leaders to add nominations to the Google link below so that each club candidate can receive an additional 5 points to their total score. Links to the Applications are included below. If youth 14 and older (and a three year 4-H member) want to participate but are not nominated by a club, you can still participate if they wish this year. *Only club nominees will be accepted for prince and princess.*

Nomination Link: <https://forms.gle/7CXyXCJ8sXxBM7pU6>

The application for both King & Queen nominees can be found at:

<https://docs.google.com/document/d/12q8rvh1NIKjH2c09T9NOxtKLFH1gi1Ab/edit?usp=sharing&oid=111559126409073132283&rtpof=true&sd=true>

(applications need limited to 8 pages)

The application for both Prince and Princess nominees can be found at:

<https://docs.google.com/document/d/18NC1ig9ZjwhR-3jX1q5PqwV-Xw5poLpV/edit?usp=sharing&oid=111559126409073132283&rtpof=true&sd=true>

(applications should be limited to 3 pages)

Thank you and please contact us at 4hkingandqueensncoks@gmail.com for questions.

2024-25 Shawnee County 4-H King
Cameron Thompson

2024-25 Shawnee County 4-H Queen
Megan Louderback



Shawnee County 4-H *Chatterbox*

"To Make the Best Better!"

From The Fair Board

Planning for the 2025 Shawnee County Fair is well underway, and the Shawnee County Fair board needs help with some of the fair committees. You do not have to be a board member to serve on one of the committees. If you like these fair events, please volunteer to help. Our small volunteer group cannot cover everything over the entirety of the fair. If you would like to help with a committee, please e-mail Secretary Gayle Bayless at gbjewelsbydesign@gmail.com by May 27th.

Fair Committees:

- Advertising
- Car Show Committee
- Open Entries Committee
- Public Event Activities
- Watermelon Feed Committee
- Fair Set Up and Take Down Committee
- Kids Day (Friday) Committee
- Livestock Sale Food Events Committee

4-H Art Day

Learn new art techniques that will spark your creativity! Make something that you can enter into the Visual Arts project at the Shawnee County Fair!

- Printmaking
- Paper Mache
- Watercolor
- Dot Painting
- Seed Art



Join us Saturday, June 14 in the upstairs Extension Office Meeting Room. Art stations will be open from 9:00 am - 12:00 pm. Come when you can, stay as long as you like.

Please RSVP to ensure that we have enough supplies. Scan the QR code and fill out the Google form. All ages welcome.

Questions? Contact Jenny VanLeeuwen, Visual Arts Superintendent,
jenvanlee@mac.com



"To Make the Best Better!"

Livestock Corner

LAST SESSION FOR YQCA

2025 YQCA sessions will be held at the following times:



Saturday, May 17 at 9 am

State Livestock Nomination Dates



- May 1: Nomination Deadline for Market Beef, steers and market heifers
- June 5: DNA Envelopes Ordered for Small Livestock & Commercial Breeding Heifers
- June 15: Nomination Deadline for Small Livestock & Commercial Heifers
 - market hogs, commercial gilts, market lambs, commercial ewes, market meat goats, breeding does (ALL- commercial and registered), commercial heifers

Families who have previously nominated livestock should have an email from Lexie Hayes with more detailed information. In addition, more information can be found at: <https://www.asi.k-state.edu/extension/youth-programs/nominated-livestock/>. If you have questions, please reach out to the office and we can connect you to the state office.

Important Update to Livestock Rules for County Fair

Sheep, Swine & Meat Goat Limits Increased

The maximum number of entries for all three small animal livestock species has been increased! You can now bring 3 animals/phase of the project (breeding or market) with a maximum of 6 animals/species. So you could bring up to 3 market hogs & 3 gilts, 3 market lambs & 3 breeding ewes, and 3 market goats & 3 breeding does. All county fair animals must be tagged either at their species Weigh-In date or by the Friday immediately following if you are unable to make it to tagging & weigh-in. Animals tagged outside of weigh-in will not be eligible for the Rate of Gain contest at the fair.

Review of Livestock Sale Rules

The limit for the premium auction will still be 2 animals/4-Her. Beef, Sheep, Swine, Meat Goats, Poultry, & Meat Rabbits are all eligible. We will use the same structure as in the 2024 fair, with the option to sell you animal for premium only and take it home, or sell it for premium and floor & have a buyer send it to a locker. Youth from all species will be required to complete YQCA training, attend 2 of 3 educational sessions hosted by the Livestock Committee, and turn in livestock drug withdrawal & buyer forms in order to sell an animal through the premium auction.

Shawnee County 4-H Chatterbox

"To Make the Best Better!"

Show Opportunities

Gary Fuller Spring Classic

On the Lyon County Fairgrounds



May 3-4, 2025 — Lyon County Fairgrounds, Emporia, KS
No Pre-Entries - Enter Day of Show ONLY
\$20 per head (cash or check only)

SCHEDULE:

Saturday, May 3 — sheep, goats and beef

8:00-8:30 a.m. Sheep Weigh-in/Breeding Check-in
9:00-9:30 a.m. Meat Goat Weigh-in/Breeding Check-in
9:30 a.m. Sheep Show
11:30 a.m. Goat Show (or 30 minutes after Sheep Show)
3:00-4:00 p.m. Market Beef weigh-in & breeding heifer check-in
2:30 p.m. Bucket Calf Check-in
3:15 p.m. Bucket Calf Show
4:30 p.m. Beef Show — show order: heifers, showmanship, Lyon County only class, followed by market

Sunday, May 4 — swine

7-8:00 a.m. Scales Open (exhibitors weigh own hogs)
9:00 a.m. Swine Show — beginning with showmanship

The Bluestem Farm & Ranch Supply Prize Trailer will be available for awards.
All showmanship exhibitors will receive an award T-shirt (will receive a t-shirt for each showmanship class entered)

Champion prospect market hog will receive a Gary Fuller Spring Classic buckle!

Open to 4-H/FFA youth ages 7 to 18 (4-H age) exhibiting sheep, meat goats, market steers and heifers, breeding heifers, bucket calves and swine



For more information contact:
Lyon County Extension Office
2632 W Hwy 50
Emporia, KS 66801
(620) 341-3220



Kansas State University is committed to making its services, activities and programs accessible to all participants. If you have special requirements due to a physical, vision, or hearing disability, contact K-State Research and Extension — Lyon County office at 620-341-3220 or Director of Affirmative Action, Kansas State University, (TTY) 785-532-4807. K-State Research and Extension is an equal opportunity provider and employer.

Shawnee County Spring Show

May 10th, 2025

Livestock Building, Northeast Kansas
Heritage Complex

12200 214 Rd, Holton, KS 66436

For show information contact: 4-H
Livestock Committee

Telephone: (785) 232-0062 Ext. 120 E-
mail: wienosg@ksu.edu

Sponsored by: The Shawnee County 4-H
Livestock Committee

Find the flyer, rules, class listings and
more at: https://www.shawnee.k-state.edu/4-h/4-h_livestock/spring_show/



Links for Dog and Horse Shows and Clinics

Dog Events: <https://www.kansas4-h.org/educational-experiences/project-based-events/conferences-events/dog/local-dog-events/>

Horse Events: <https://www.kansas4-h.org/educational-experiences/project-based-events/conferences-events/horse/districthorseshows.html>

Shawnee County 4-H Chatterbox

K-STATE
Research and Extension

 Shawnee
County

"To Make the Best Better!"

State Events

Registration for Discovery Days closes MAY 5TH!
Find more information and the registration link at:

<https://www.kansas4-h.org/educational-experiences/project-based-events/conferences-events/discovery-days/>



For more information visit the state website at <https://www.kansas4-h.org/educational-experiences/project-based-events/conferences-events/geology-field-trip/>

Registration closes May 26! Event webpage
is <https://www.kansas4-h.org/educational-experiences/project-based-events/conferences-events/insect-spectacular/>



"To Make the Best Better!"

Young Innovators Market Contest Grades 7th-12th

Do you have a small business
with a product to sell?

Food, Jewelry, Art, etc. we want to
see it all! There will be prizes for
best booths and you get to keep
your sales.



Contest:

June 20th at Every Plaza

- Set up 5:00pm - 5:30pm
- Contest 5:30pm - 6:30pm
- Awards 7:00pm

There will be a learning session prior to the
contest. All youth 7th-12th grade
(2025-2026 school year)
are encouraged to participate!

Learning Sessions:

- June 12th for Food Businesses (Required)
- June 13th for non food businesses.

The learning sessions are opportunities for you
to learn about creating a market booth, pricing
and strategies to engage with customers.

They will be from 5:30pm-7:00pm at the
Shawnee County Extension Office. The address is
1740 SW Western Ave, Topeka, KS 66604.

The Contest will have Cash Prizes!*

1st place \$1,000 prize

2nd place \$800 prize

3rd place \$600 prize

* Prizes sponsored by
Shawnee Startups and Go
Topeka!

Rules:

- Youth must be residents or
attending school in Shawnee
County
- Youth must be in 7th-12th grade
- All products being sold must be
listed in the application and must
be approved prior to the contest
by the contest organizers

Registration due by June 3rd

You can register online at

<https://rb.gy/itlk3s>

Or by calling the
Shawnee County Extension office
785-232-0062

**go
topeka**

Kansas State University is committed to making its services, activities and programs accessible to all participants. If you have special requirements due to a physical, vision, or hearing disability, contact Candis Stiles, 785-232-0062.

Kansas State University Agricultural Experiment Station and Cooperative Extension Service
K-State Research and Extension is an equal opportunity provider and employer.

Shawnee County 4-H *Chatterbox*

"To Make the Best Better!"

Club Chatter

Rossville Rustlers

The Rossville Rustlers 4-H Club met April 21, 2025 at Citizen Potawatomi Community Building. Members of the club presented information in the form of project talks. The next monthly meeting is scheduled for May 19, 2025.



Auburn

The Auburn 4-H club met for the April meeting at the Auburn Community center. One of the Auburn club leaders presented the Auburn 4-H pin board. After the pin board was presented our club leader passed out 4-H day ribbons. We had great discussion on what we should do for our community project. We had three great project talks and ended the meeting with a fun recreation.

-Lilly Bayless

Silver Lake

Silver Lake 4-H Club met at Silver Lake United Methodist Church on Sunday, April 13th at 2 pm. Alissa Thomas gave a program on the horse project, and discussed several items during the club meeting. After the meeting, members of the club helped clean up the Silver Lake community organized by 'We Are Silver Lake' who teamed up with Keep America Beautiful of Shawnee County. The Silver Lake 4-H members picked up a lot of trash along highway 24, at Lion's Club park and along the river road.

-Clara Thomas



Bunny Bunch

Bunny Bunch was out at the Great Topeka Easter fest this month and had a wonderful experience. The community was thrilled to learn about and pet some super friendly bunnies. We are hoping to have several new family's join our club from the outing.

Bunny Bunch 4-H meets the first Monday of each month at the extension office. Our next meetings will be May 5th and then June 2nd. We hope to see you there.

-Brooklynn Powell



Shawnee County 4-H Chatterbox

"To Make the Best Better!"

Shawnee County 4-H Calendar

May 2025

- 1 Shooting Sports II, EMR, 6:30 pm
4-H Exchange, Farm Bureau Building, 7 pm
- 5 Bunny Bunch Club Meeting, EMR, 7 pm
Livestock Judging Practice, Downstairs
Conference Room, 7 pm
- 7 Robotics/Coding Project Meeting, EMR, 6:30 pm
- 10 Shawnee County Spring Livestock Show,
Holton
- 12 Shooting Sports I, EMR, 7 pm
- 13 Sport Fishing, EMR, 6 pm
- 14 Archery, Domer Arena, 6 pm
Livestock Judging Practice, Downstairs
Conference Room, 7 pm
- 17 YQCA Training, EMR, 9 am
- 20 Geology, **EMR**, 7 pm
- 21 Livestock Committee Meeting, Downstairs
Conference Room, 7:15 pm
- 22 Horse Club Meeting, EMR, 7 pm
- 26 Office Closed- Memorial Day**
Paw Prints Dog Club Meeting, EMR, 7 pm-
subject to change
- 27 Chatterbox Submissions Due**
Shawnee County Fair Board, EMR, 7 pm
- 28 Archery, Domer Arena, 6 pm
- 30 Horse ID Papers due to Office by 5 pm

June 2025

- 4 Robotics/Coding Project Meeting, EMR, 6:30 pm
- 2 Bunny Bunch Club Meeting, EMR, 7 pm
- 5 4-H Exchange, Farm Bureau Building, 7 pm
- 12 Archery, Domer Arena, 6 pm
4-H Events Council Meeting, EMR, 7 pm
- 17 Geology, **EMR**, 7 pm
- 18 Archery, Domer Arena, 6 pm
Livestock Committee Meeting, Downstairs
Conference Room, 7:15 pm
- 21 4-H Royalty Interviews, Extension Office
- 23 Paw Prints Dog Club Meeting, EMR, 7 pm
- 24 Shawnee County Fair Board, EMR, 7 pm
- 26 Horse Club Meeting, EMR, 7 pm

Chatterbox Submissions Due



EMR= Extension Meeting Room at
Extension Office

K-State Research and Extension is an equal opportunity provider and employer.

K-State Research and Extension is committed to providing equal opportunity for participation in all programs, services and activities. Accommodations for persons with disabilities may be requested by contacting the event contact (Grace Wiens) two weeks prior to the start of the event. You may make a request by calling 785-232-0062, ext. 120, or by e-mail at wiensg@ksu.edu. Requests received after this date will be honored when it is feasible to do so.

All dates and activities are subject to change.