



SHAWNEE COUNTY EXTENSION MASTER GARDENERS

BUTTERFLY GARDEN DESIGN

DESIGN TIPS

Location A sunny spot sheltered from the wind is the best location.

What to Plant Design plans should include milkweed plants for the monarch caterpillars to eat when they hatch as well as nectar plants for adult monarchs. Host plants for Swallowtail and other species one wants to attract, should also be included.

Grouping Plants Planting flowers in groups creates blocks of color more visible to butterflies. A 3 to 4 square foot block is best.

Muddles A mud puddle, “muddle” provides water and minerals needed by butterflies. A dish with moistened sand or a shallow depression in a rock that holds water will also work.

Basking A large flat rock in full sun provides a preferred spot for butterflies to warm up on a cool day.

Treats Butterflies enjoy a treat of rotten fruit. You can freeze your over ripe bananas for this purpose.

Pest Control Be mindful with your pesticide use. Many pests can be controlled through non-chemical methods if populations are low. Pesticides, even organic products, can kill pollinators. For more information on butterfly friendly pest control contact your local extension office.

BUTTERFLY FAVORITES INCLUDED IN THE ATTACHED DESIGNS

2018 Plants grown in the Shawnee County Extension Master Gardener Greenhouse

Perennials

- A *Solidago speciosa* (Showy Goldenrod) Missouri native. Blooms bright yellow July to frost. 2-3' tall and wide. Full sun to light shade. Fall nectar plant for butterflies
- B *Asclepias tuberosa* (Orange Butterfly Weed) Kansas native. Blooms orange June to August 2.5' tall x 3' wide at maturity. May take 2 to 3 years to flower. Host plant for monarchs.
- C *Symphotrichum oblongifolium* (Aromatic Aster) Kansas native. Blooms purple August & September. 1-2' tall and wide. Can use as ground cover. Full sun to light shade. Fall nectar plant for butterflies.

Annuals

- D *Tithonia* (Mexican Sunflower). Blooms orange mid-summer to frost. 4-5' tall x 3' wide. Nectar plant for butterflies.
- E *Angelonia* 'Angelface Super Blue Deep'. Purple blooms late spring until frost with no deadheading. Use as a “thriller” in pots. 20-24” x 12-14”. Pinch to control height. Nectar plant.

- F *Salvia farinacea*, 'Victoria Blue'. Blooms late spring to early fall. 20" tall x 16" wide. Nectar plant for butterflies.
- G *Zinnia elegans x A angustifolia* (Profusion Zinnias). Scarlet, orange & yellow blooms June to frost 12" tall x 15" wide. Nectar plant for butterflies.
- H *Salvia splendens* 'Hotline Red'. Blooms summer until frost. Nectar plant loved by hummingbirds as well as butterflies. 10-12" tall and wide.
- I *Petroselinum crispum* (Parsley, Moss Curled). Biennial herb and host plant for the Swallowtail butterfly. Full sun to light shade. 12" x 12"

Spring Nectar Perennials

- J *Phlox Sublata* (Moss Phlox) Xeric perennial groundcover. Blooms white, pink or lavender March – May.
- K *Allium schoenoprasum* (Chives) Native perennial and edible herb. Deadhead before seed set to prevent reseeding. It is thought to repel aphids. Blooms April – May.
- L *Salvia sylvestris* (Meadow Sage) Perennial with several varieties. Blooms a purple blue or pink late spring and summer.

Spring nectar is supplied by flowering trees and shrubs. If these are not available nearby, you may wish to include these spring flowering perennials.

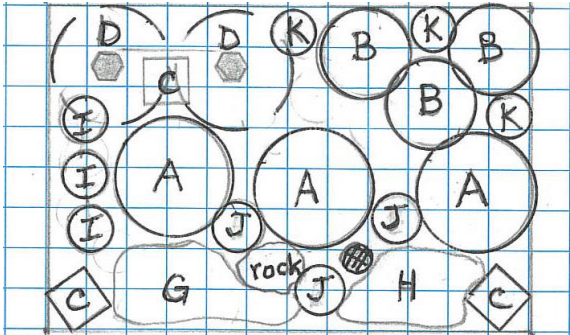
KEY

¼ inch = 1 foot

Border Butterfly Bed

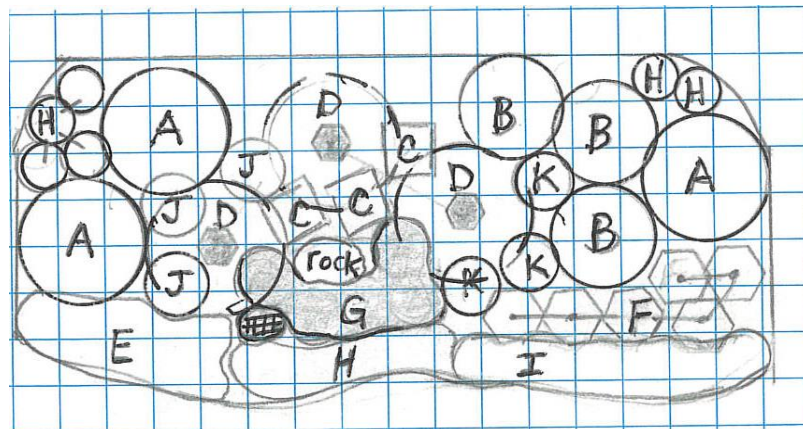
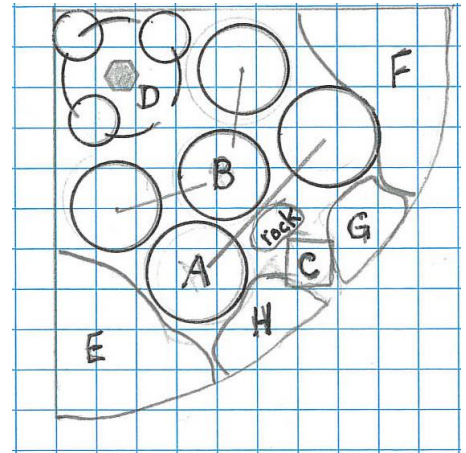
designed to be viewed from the front and sides

12 feet x 8 feet



Corner Butterfly Bed

10 feet x 10 feet



Island or Border Butterfly Bed

16 feet x 8 feet

K-STATE
Research and Extension

Master Gardener
Shawnee County

Contact Us!

1740 SW Western Avenue
Topeka, KS 66604

785 232-0062

www.shawnee.ksu.edu

Kansas State University Agricultural Experiment Station and Cooperative Extension Service

K-State Research and Extension is an equal opportunity provider and employer.