



SHAWNEE COUNTY EXTENSION MASTER GARDENERS

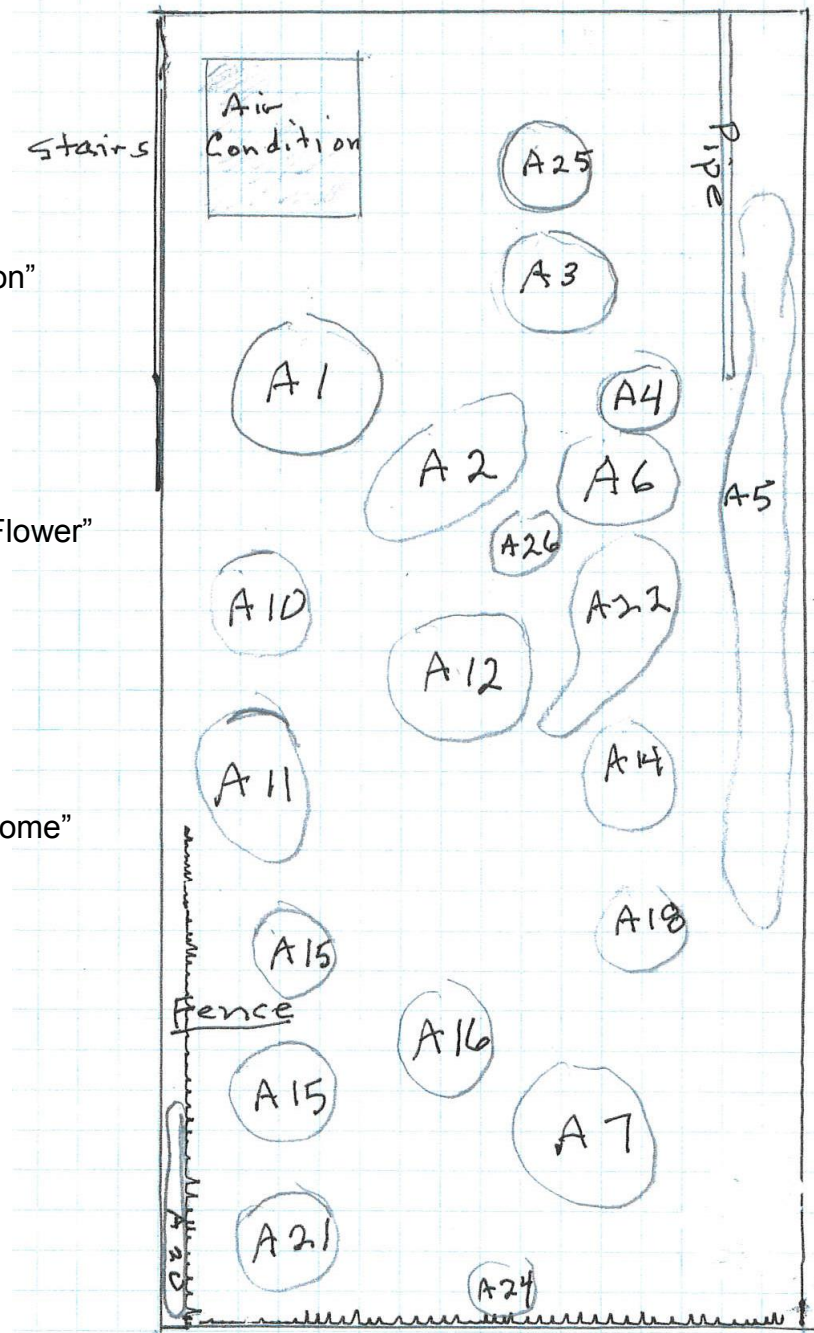
XERISCAPE DEMONSTRATION GARDEN

SECTION A

Plant List

- A1 False Indigo
- A2 Catmint "Walkers Low"
- A3 Goldenrod
- A4 Zagreb Coreopsis
- A5 Boltonia
- A6 Butterfly Bush "White Profusion"
- A7 Butterfly Bush "Miss Ruby"
- A10 Purple Poppy Mallow
- A11 Curly Leaf Parsley
- A12 Rue
- A14 Baptista Yellow Wild Indigo
- A15 Butterfly Milkweed "Butterfly Flower"
- A16 Nettle Leaved Mullein
- A18 Yellow Yarrow "Anthem"
- A20 Lamb's Ear "Hummelo"
- A21 Salvia "Furman's Red Sage"
- A22 Bronze Leaf Fennel
- A24 Dutchman's Pipe
- A25 New England Aster "Purple Dome"
- A26 Annual Milkweed

N



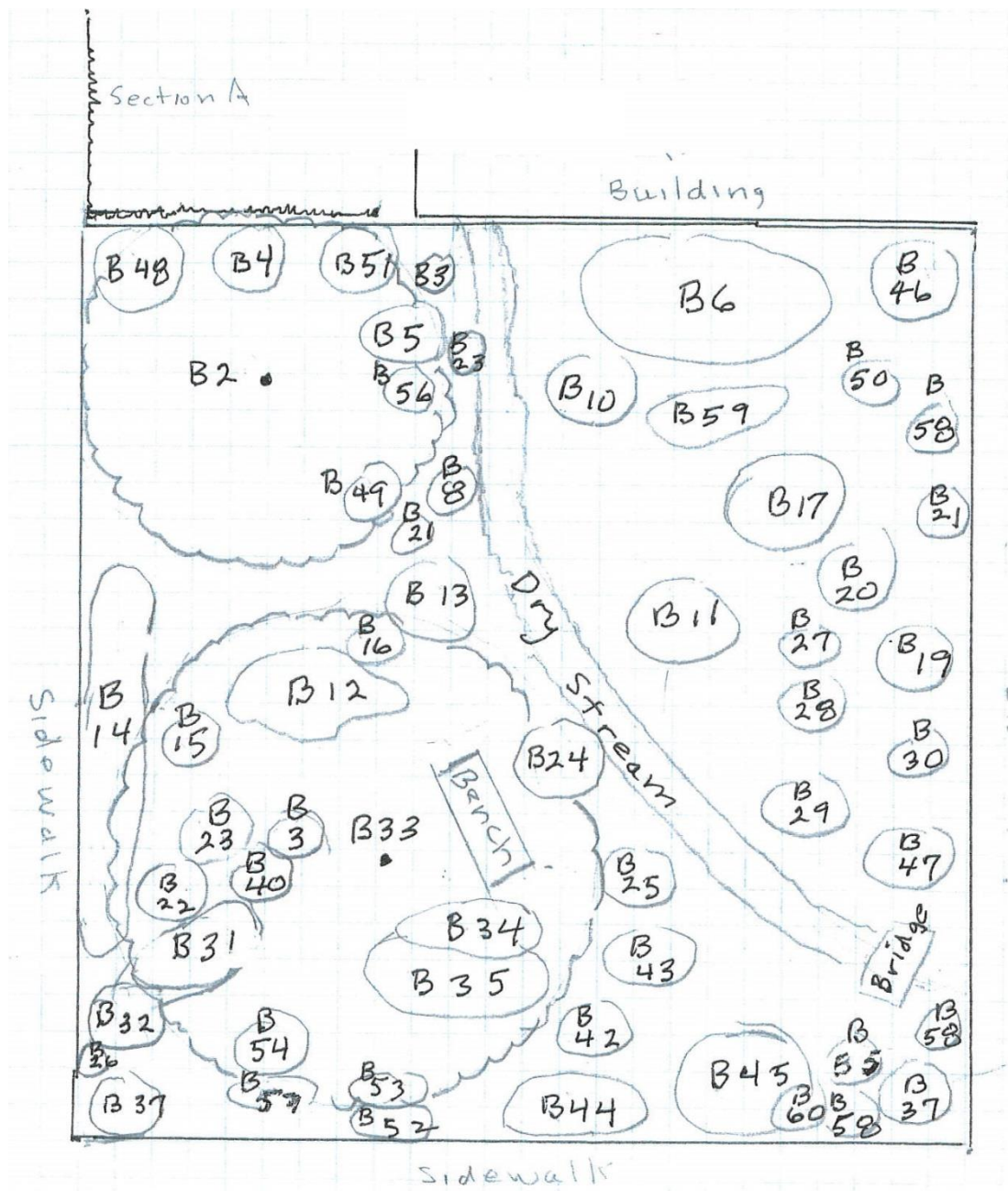


SHAWNEE COUNTY EXTENSION MASTER GARDENERS

XERISCAPE DEMONSTRATION GARDEN

SECTION B

N





SHAWNEE COUNTY EXTENSION MASTER GARDENERS

XERISCAPE DEMONSTRATION GARDEN

SECTION B

Plant List

- | | | | |
|-----|--|-----|------------------------------------|
| B2 | Sargent Crabapple | B35 | Grape Hyacinth |
| B3 | Goldenrod | B37 | Brightedge Yucca "Flamentosa ssp" |
| B4 | Butterfly Milkweed "Butterfly Flower" | B40 | Peony "Ray Payton" |
| B5 | Oriental Poppy | B42 | Poker Plant |
| B6 | Rugosa Rose | B43 | California Fuchsia "Orange Carpet" |
| B8 | Gayfeather "Floristan Violet" | B44 | Missouri Evening Primrose |
| B10 | Serviceberry "Regent" | B45 | Blue Sargent Juniper "Glauca" |
| B11 | Russian Sage | B46 | Red Leaf Barberry |
| B12 | Little Blue Stem | B47 | Hardy Geranium |
| B13 | Kelsey Red-Stemmed Dogwood | B48 | Black Eyed Susan "Goldstrum" |
| B14 | Catmint "Walkers Low" | B49 | Neon Sedum |
| B15 | Sea Holly "Big Blue" | B50 | Beebalm |
| B16 | Narrow-Leafed Blue Star "Hubrechi" | B51 | Agastache "Blue Fortune" |
| B17 | Staghorn Sumac "Tiger Eyes" | B52 | Yarrow "Strawberry Seduction" |
| B19 | Coneflower "White Swan" | B53 | Yarrow "Little Moonshine" |
| B20 | Coneflower "Pow Wow Wild Berry" | B54 | Miscanthus "Gold Bar" |
| B21 | Purple Coneflower | B55 | Rose Verbena |
| B22 | Potentilla | B56 | Blue Sage |
| B23 | Speedwell | B57 | Ohio Spiderwort |
| B24 | Geranium Cranesbill | B58 | Lamb's Ear |
| B25 | Pink Dianthus "Bath's Pink" | B59 | Wild Ageratum |
| B26 | Stonecrop Sedum | B60 | Jonquils / Daffodils |
| B27 | Yarrow "Moonshine" | | |
| B28 | Gold Yarrow "Coronation Gold" | | |
| B29 | Fragrant Dwarf False Indigo "Arkansas" | | |
| B30 | Salvia "May Night" | | |
| B31 | Peony "Old Fashioned White" | | |
| B32 | Indian Coralberry / Buckbush | | |
| B33 | Kentucky Coffeetree "Prairie Titan" | | |
| B34 | Blue Spruce Sedum "Blue Spruce" | | |



SHAWNEE COUNTY EXTENSION MASTER GARDENERS

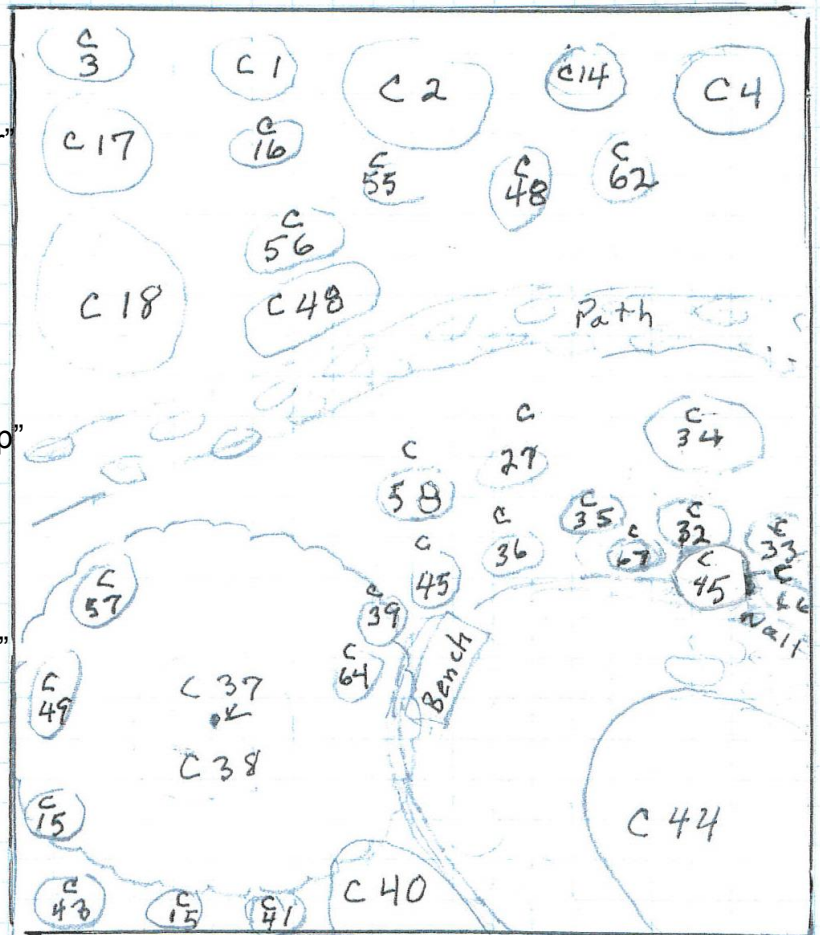
XERISCAPE DEMONSTRATION GARDEN

SECTION C

Plant List

- C1 Dwarf Weigela "Variegated Nana"
- C2 Butterfly Bush "White Profusion"
- C3 Feather-Reed Grass "Karl Foerster"
- C4 Maiden Grass "Variegatos"
- C14 Switch Grass "North Wind"
- C15 Lamb's Ear
- C16 Munstead Lavender
- C17 Purple Beautyberry "Issai"
- C18 Fragrant Sumac "Gro-Low"
- C21 Brightedge Yucca "Filamentosa ssp"
- C27 Peony "Felix Supreme"
- C32 Wormwood "Powis Castle"
- C33 Hardy Hibiscus "Rose Mallow"
- C34 Snow in Summer
- C35 Wine & Roses Weigela "Alexandra"
- C36 Beebalm
- C37 Native Redbud
- C38 Lilytuft
- C39 Blue Spruce Sedum
- C40 Blue Chip Juniper
- C41 Blue Fescue "Elijah's Blue"
- C43 Color Guard Yucca "Filamentosa"
- C44 Buffalograss "Tatanya"
- C45 Soapwort
- C48 John Creech Stonecrop
- C49 Catmint "Walker's Low"
- C55 Common Milkweed "New England Aster"
- C56 Mexican Hat "Red Midget"
- C57 Wild Sweet William
- C58 Peony "Green Lotus"
- C59 Salvia "Plumosa"

N



- C62 Speedwell "Blue Charm"
- C64 Missouri Evening Primrose
- C66 Creeping Phlox "Emerald Blue"
- C67 Creeping Phlox "Pink Profusion"



SHAWNEE COUNTY EXTENSION MASTER GARDENERS

XERISCAPE DEMONSTRATION GARDEN

SECTION D

Plant List

- D5 Maiden Grass "Gracillimus"
- D6 Compact Burning Bush "Compactus"
- D7 Dwarf Bosnian Pine
- D8 Great Coneflower
- D10 False Indigo
- D11 Hollyhock
- D12 Allium "Snow Queen"
- D13 St. John's Wort "Sunburst"
- D19 Texas Red Yucca "Parviflora"
- D20 Desert Candle "Sapphire Skies"
- D22 Yellow Garden Mum "Legend"
- D23 Daylily "Spiderman"
- D24 Zagreb Coreopsis
- D25 Coreopsis "Early Sunrise"
- D26 Cascading Ornamental Oregano
- D28 Orange Mums
- D29 Daylily "Stella d'Oro"
- D30 Candytuft "Purity"
- D31 Bluemist Spirea "Dark Knight"
- D42 Goldenrod
- D46 Mother of Thyme
- D47 Four O'Clock
- D50 Butterfly Milkweed "Butterfly Flower"
- D51 Aster "Peter the Third"
- D52 Aster "Wood's Pink"
- D53 Aster "Wood's Blue"
- D54 Sneeze Weed "Dakota Gold"
- D60 Salvia "Furman's Red Sage"
- D63 Speedwell "Sunny Border Blue"
- D65 Coreopsis "Santa Fe Yellow"
- D68 Lavender Cotton

N

