



4-H SCHOOL ENRICHMENT PROGRAM

**Shawnee County K-State Extension
Fall 2025 – Spring 2026 School Year**





DEAR EDUCATORS

K-State Extension has a long-standing tradition of providing school enrichment programs to classrooms across Kansas. At the Shawnee County Office, we are ecstatic to offer these opportunities to our local classrooms. Our programs fall into a wide range of areas; including but not limited to:

- Biological Sciences
- Environmental Sciences
- Food & Nutrition
- Plant Sciences

We are focused on providing youth with an opportunity to explore, discover, and master through positive hands-on activities and interactive discussions with classmates and caring adults. Shawnee County Extension has six agents in the areas of:

- Agriculture
- Horticulture
- Family and Consumer Sciences
- Community Vitality
- 4-H Youth Development
- Foods and Nutrition Education

We also have several Program Assistants/Educators in the above areas. Please contact us to reserve programs for your classroom. Don't see a topic your students would be interested in? Reach out! This booklet contains only a sample of what Shawnee County Extension has to offer.

Kansas State University Agricultural Experiment Station and Cooperative Extension Service. K-State Research and Extension is an equal opportunity provider and employer. Kansas State University is committed to making its services, activities, and programs accessible to all participants. If you have special requirements due to a physical, vision, or hearing disability, or a dietary restriction please contact Grace Wiens (785) 232-0062, ext.

INVOICING

Invoices will be sent to teachers in April after all programs are delivered.

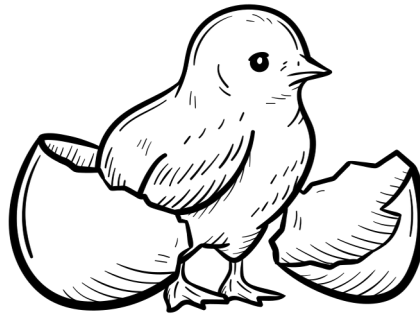
SPONSORS

It is a goal of the 4-H office to reach out to investigate some sponsorship of programs and/or schools.

If your school or district works closely with any business you think might be interested in helping, please let us know. We are happy to make new connections to help better the community.

Kansas State University Agricultural Experiment Station and Cooperative Extension Service. K-State Research and Extension is an equal opportunity provider and employer. Kansas State University is committed to making its services, activities, and programs accessible to all participants. If you have special requirements due to a physical, vision, or hearing disability, or a dietary restriction please contact Grace Wiens (785) 232-0062, ext. 120.

CHICKEN EMBRYOLOGY



\$17.00 for 12 eggs & an incubator

\$7.00 for 12 eggs only

Targeted Grade Levels: 2nd- 3rd

Availability: One Session in October, February, and
March.

(See Program Calendar for more details.)

Observation Length: 4 weeks

Standards: NGSS 3-LS1-1; 3-LS3-1

Extension Office Provides: One dozen hatching eggs,
online resources, detailed instructions, incubator (if
needed), and other educational materials (as
requested).

Teacher Provides: Daily observation, brooder, feeder,
and waterer once chicks have hatched.

Over four weeks, students will learn about embryology
development through observing the 21-day incubation
period while getting a chance to hatch their chicks. Youth
will also learn about proper handwashing while handling
chicks and the responsibility of raising chickens.

ANTS

Price: \$10.75

Target Grade Levels: 1st-4th

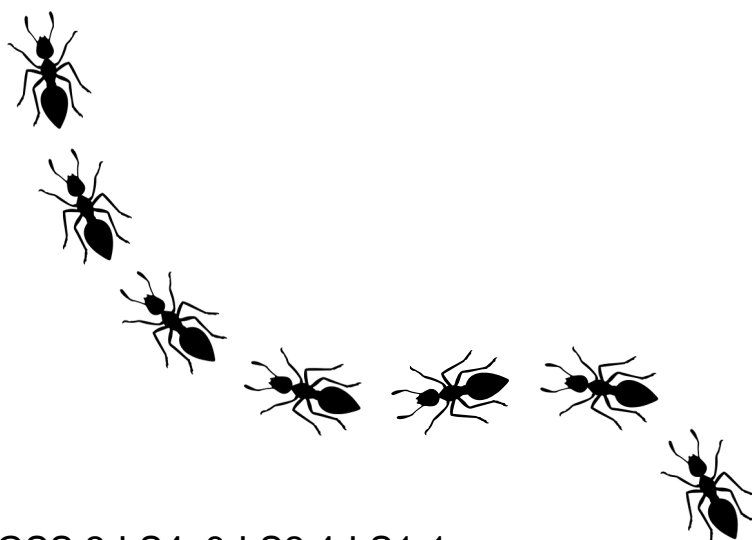
Availability: One session in October, and April.
(See Program Calendar for more details.)

Observation Length: 3-4 Weeks Standards: NGSS 2-LS4; 3-LS2;4-LS1-1

Extension Office Provides: Ant farm, live ants, ant food, and water dropper, online resources, and other educational materials as requested.

Teacher Provides: Daily observation, feeding, and watering.

Over four weeks students will get to watch the ants build the colony while learning about ant anatomy, life-cycle, and the role of ants in the environment.



Price: \$4.00 per kit
(each kit serves three
students)

Target Grade Level: 4th
Availability: Two separate sessions
in January
(See Program Calendar for more
details.)



WHEAT SCIENCE

Standards: Math-4.MD.1, Math-4.MD.2, HGSS Focus Standard 5

Extension Office Provides: One bread kit per 3 students, bread instructions, online resources, and other educational materials as requested.

Teacher Provides: Water, oil, measuring utensils, and an oven to bake the bread.

This is the perfect program for Kansas Day! Over two weeks, students will explore the importance of Kansas wheat, the principles of baking, yeast development, and good nutrition.

BUTTERFLIES

Price: \$8.50 for three larvae

Target Grade Levels: 1st and 2nd

Availability: One session in April
(See Program Calendar for more details.)

Standards: NGSS 1-LS1-1-2; 3-LS1-1



Extension Office Provides: 3 Painted Lady larvae, with food, online resources, butterfly habitat (if needed), and other educational materials as requested.

Teacher Provides: Daily observation, sugar water (once butterflies have emerged).

For four weeks students will gain firsthand knowledge of insects and the process of development from larvae to adults. They will also gain an understanding of what insects are and how they fit into our world.



FROM FARM TO YOU

From Farm to You is a one-day event designed to show second-grade students that agriculture impacts everyone, from the food we eat to the clothes we wear, and more! Every class gets to visit learning stations taught by experts in the field of agriculture.

Date and Location To Be Determined

If you are interested in getting your classroom signed up,
please reach out to our Director, Candis Stiles, candism@ksu.edu

Note: This event fills up quickly!

2025–2026 PROGRAM CALENDAR

September 2025						
Sunday	Monday	Tuesday	Wednesday	Thursday	Friday	Saturday
	1	2	3	4	5	6
7	8	9	10	11	12	13
14	15	16	17	18	19	20
21	22	23	24	25	26	27
28	29	30				

October 2025						
Sunday	Monday	Tuesday	Wednesday	Thursday	Friday	Saturday
			1	2	3	4
5	6	7	8	9	10	11
12	13	14	15	16	17	18
19	20	21	22	23	24	25
26	27	28	29	30	31	

November 2025						
Sunday	Monday	Tuesday	Wednesday	Thursday	Friday	Saturday
						1
2	3	4	5	6	7	8
9	10	11	12	13	14	15
16	17	18	19	20	21	22
23	24	25	26	27	28	29
30						

December 2025						
Sunday	Monday	Tuesday	Wednesday	Thursday	Friday	Saturday
	1	2	3	4	5	6
7	8	9	10	11	12	13
14	15	16	17	18	19	20
21	22	23	24	25	26	27
28	29	30	31			

Deadlines




September 23: Fall ant and chick orders due

October 14: Fall ant and chick delivery

November 12: Fall ant and chick pickup

December 5: Wheat science order due

Delivery and pick up dates are subject to change

-  Orders due
-  Program delivery
-  Program pickup

2025–2026 PROGRAM CALENDAR

January 2026						
Sunday	Monday	Tuesday	Wednesday	Thursday	Friday	Saturday
				1	2	3
4	5	6	7	8	9	10
11	12	13	14	15	16	17
18	19	20	21	22	23	24
25	26	27	28	29	30	31

February 2026						
Sunday	Monday	Tuesday	Wednesday	Thursday	Friday	Saturday
1	2	3	4	5	6	7
8	9	10	11	12	13	14
15	16	17	18	19	20	21
22	23	24	25	26	27	28

March 2026						
Sunday	Monday	Tuesday	Wednesday	Thursday	Friday	Saturday
1	2	3	4	5	6	7
8	9	10	11	12	13	14
15	16	17	18	19	20	21
22	23	24	25	26	27	28
29	30	31				

April 2026						
Sunday	Monday	Tuesday	Wednesday	Thursday	Friday	Saturday
			1	2	3	4
5	6	7	8	9	10	11
12	13	14	15	16	17	18
19	20	21	22	23	24	25
26	27	28	29	30		

May 2026						
Sunday	Monday	Tuesday	Wednesday	Thursday	Friday	Saturday
					1	2
3	4	5	6	7	8	9
10	11	12	13	14	15	16
17	18	19	20	21	22	23
24	25	26	27	28	29	30
31						

Deadlines

January 7 OR 26: Wheat science delivery

January 13: Winter chick order due

January 22 OR February 10: Wheat science pickup

February 3: Winter chick embryo delivery

March 3: Winter chick embryo pickup




March 9: Spring chick, ant & butterfly orders due

March 31 & April 1: Spring chick, ant & butterfly delivery

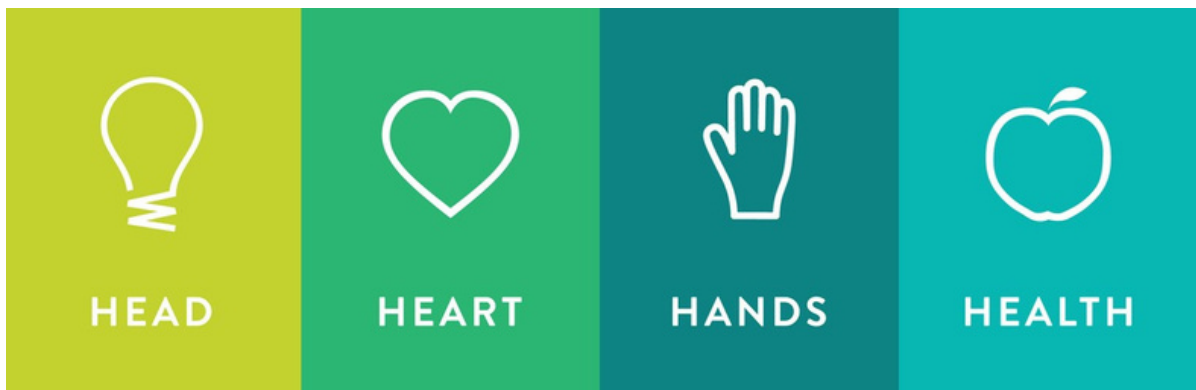
April 28 : spring chick embryo pickup

May 5 & 6: ant & butterfly pickup

May 15: last day to return all program materials & payments due

-  Orders due
-  Program delivery
-  Program pickup

Delivery and pick up dates are subject to change



CONTACT US FOR MORE INFORMATION

Shawnee County K-State
Research and Extension Office
1740 SW Western Ave.
Topeka, KS 66604

(785) 232-0062

www.shawnee.ksu.edu

Lisa Satterthwaite
4-H Program Assistant
lsatter@ksu.edu

Scan QR
Code to
sign-up!



K-STATE
Research and Extension



Shawnee
County